

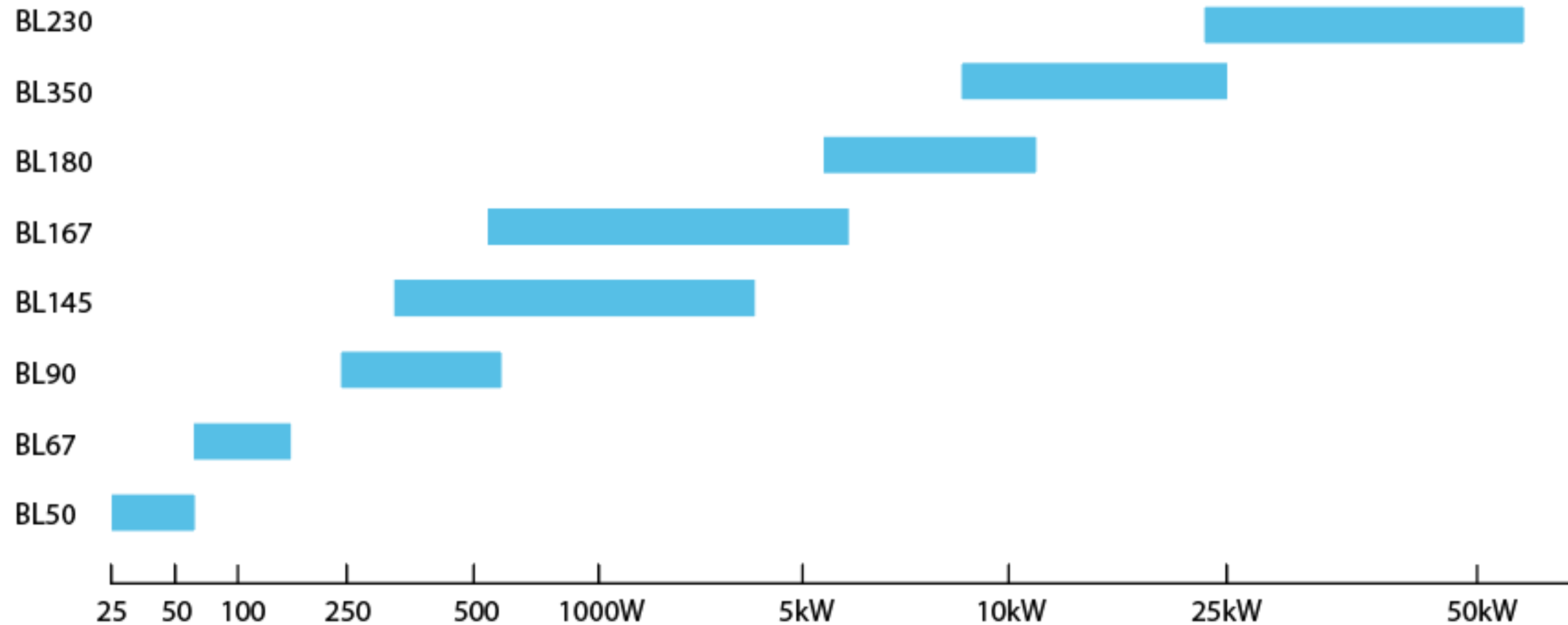


KOLEKTOR

PRODUCT CATALOGUE

PERMANENT MAGNET BRUSHLESS MOTORS AND DRIVES

PRODUCT GROUPS MOTORS AND DRIVES



Continuous mechanical power

The chart enumerates typical characteristics associated with each motor group. Variations in motor length, corresponding to distinct values of Nominal torque, are discernible within each motor group.

Values in presentation correspond to measured motor characteristics at 23 C ambient temperature. Increased operational values for S1 and S2 can be achieved through enhanced heat dissipation from the assembled motor winding.

PMBL DRIVES

BL 50	BL 50		BL 50		BL 230		BL 350
BL 50/15	BL 67/10	BL 67/20	BL 67/10	BL 67/20	BL 230/80	BL 230/120	BL 350/50



Motor group	Nominal DC voltage [V]	Nominal supply DC current [A]	Nominal TORQUE [Nm]	Nominal speed [RPM]	Nominal mechanical power [W]	Peak (max) torque (S2)	Peak mechanical power [W]	Motor Controller comm. protocol
BL50	12	6	Up to 0,035	up to 16.000	58	Upcoming	Upcoming	LIN
BL67	12	22	Up to 0,6	up to 2400	Up to 150	1 (1 sec)	Up to 210	CAN
BL90	48	30 - 43	7-12	1300-1400	950-1700	Upcoming	Upcoming	CAN
BL230	400	142	120	2800	52000	Upcoming	Upcoming	CAN J1939
BL350	60	500	150	1600	25500	Upcoming	Upcoming	CAN J1939

PMBL MOTORS BL90

BL 90/70

- Without Gearbox



BL 90/30

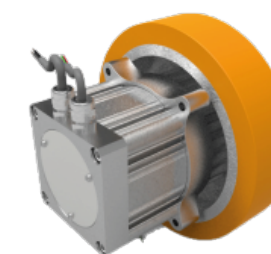
- With Gearbox 10,3
- Without Gearbox

BL 90/45

- With Gearbox 8,8
- With Gearbox 21,5
- Without Gearbox

BL 90/60

- With Gearbox 8,8
- Without Gearbox



Motor group	Nominal DC voltage [V]	Gear Box ratio	S1 - CONTINUOUS DUTY				S2 - SHORT TIME		Brake Voltage [V]	Encoder voltage & type [V]
			Nominal phase current [A]	Nominal TORQUE [Nm]	Nominal speed [RPM]	Nominal mechanical power [W]	Peak torque [Nm]	Peak mechanical power [W]		
BL 90/30	24	1 : 10,3	14	30	200	620	Upcoming	Upcoming	24 V	5V A, A inv, B, B inv
BL 90/45	24	1 : 8,8	19	20	185	240	85 @ 120 RPM (30 sec)	1060	24 V	5 V SSI 4096 PPR / AB 32 PPR
BL 90/60	96	1 : 21,5	59	45 90	90 45	~ 400	Upcoming	Upcoming	n/a	n/a
BL 90/70	48	n/a			4,5	660	11 (20 sec)	1600	n/a	n/a

PMBL MOTORS BL145

BL 145/25

- With Gearbox 8,8
- Without Gearbox



BL 145/50

- Upcoming

Motor group	Nominal DC voltage [V]	Gear Box ratio	S1 - CONTINUOUS DUTY				S2 - SHORT TIME				Encoder voltage & type 5V
			Nominal phase current [A]	Nominal TORQUE [Nm]	Nominal speed [RPM]	Nominal mechanical power [W]	Peak phase current [A]	Peak torque [Nm] @ RPM	Peak mechanical power [W]	Brake Voltage [V]	
BL 145/25	48	1 : 8,8	20	35	100	360	45	100 @ 100 (5 min)	1000	24	5 SSI + Incremental ABZ
BL 145/25	48	n/a	20	4,5	900	420	45	11 @ 900 (5 min)	1000	24	5 SSI + Incremental ABZ

PMBL MOTORS BL167

BL 167/25

- With Gearbox 8,8
- With Gearbox 42
- Without Gearbox



BL 167/50

- Without Gearbox



Motor group	Nominal DC voltage [V]	Gear Box ratio	S1 - CONTINUOUS DUTY				S2 - SHORT TIME				Encoder voltage & type 5V
			Nominal phase current [A]	Nominal TORQUE [Nm]	Nominal speed [RPM]	Nominal mechanical power [W]	Peak phase current [A]	Peak torque [Nm] @ RPM	Peak mechanical power [W]	Brake Voltage [V]	
BL 167/25	24	1 : 8,8	38	100	50	520	52	120 @ 70 (30 sec)	880	24	SSI / SIN/COS / Inc ABZ
BL 167/25	48	1 : 8,8	27	54	177	1000	54	100 @ 100 (30 sec)	1000	24	SSI + Incremental AB
BL 167/50	48	n/a	90	15	2500	3900	/	/	/	/	sin/cos single end

PMBL MOTORS BL180

BL 180/45

- Without Gearbox



BL 180/90

- Without Gearbox

Motor group	Nominal DC voltage [V]	Gear Box ratio	S1 - CONTINUOUS DUTY				S2 - SHORT TIME			
			Nominal phase current [A]	Nominal TORQUE [Nm]	Nominal speed [RPM]	Nominal mechanical power [W]	Peak phase current [A]	Peak torque [Nm] @ RPM	Peak mechanical power [W]	Brake Voltage [V]
BL 180/45	96	n/a		20	3000	6000	180	32 @ 3000 (max 2 min)	10000	n/a
BL 180/90	96	n/a	215	40	3000	12000	350	64 @ 3000 (max 2 min)	20000	n/a

KOLEKTOR

Kolektor Mobility d.o.o.

Vojova ulica 10 | SI-5280 Idrija | Slovenia
T: +386 53 750 100 | +386 53 750 150
sales@kolektor.com | www.kolektor.com